



# 太原重工股份有限公司

TAIYUAN HEAVY INDUSTRY CO., LTD.

## 齿轮传动

GEAR TRANSMISSION



地址：中国山西省太原市万柏林区玉河街53号

电话：0086-351-6362324(综合部)

6362448/6366740(工业齿轮部)

6367015(风电部)

6360506(国际贸易部)

传真：0086-351-6375557/6360154

邮编：030024

邮箱：tz-clcd@tz.com.cn

网址：www.tyhi.com.cn

Add: No.53, Yuhe Street, Wanbailin District,  
Taiyuan City, Shanxi Province China

Tel: 0086-351-6362324(Management Section)

6362448/6366740(Industry Gear Marketing Section)

6367015(Wind Power Marketing Section)

6360506(International Trade Section)

Fax: 0086-351- 6375557/6360154

P.C.: 030024

E-mail: tz-clcd@tz.com.cn

Web Site: www.tyhi.com.cn





# Introduction 公司简介



太原重工是中国重型机械行业第一家上市公司，实际控制人为太原重型机械集团有限公司，其前身为太原重型机械厂，始建于1950年，是新中国自行设计建造的第一座重型机械制造企业，占地面积370万平方米，资产总额187亿元，员工8000余人，年销售额超百亿元，属国家特大型重点骨干企业，被誉为“国之瑰宝”和“国民经济的开路先锋”。

太原重工主营：挖掘设备、起重设备、锻压设备、轧钢设备、焦炉设备、煤化工设备、铁路轮轴、齿轮传动、风力发电设备、油膜轴承、铸锻件、海洋装备等产品及工程项目的总承包。产品广泛应用于冶金、矿山、能源、交通、航天、化工、铁路、造船、环保等行业。

太原重工具有较强的自主研发能力，设计、制造的多项产品填补了国家空白，许多产品荣获国优金奖，创造了360项中国和世界第一，产品已出口到美国、印度、德国、韩国等50多个国家和地区。

Taiyuan Heavy Industry (TYHI) is the first listed company in China's heavy-duty machinery industry. It was established in 1950 and now consists of a campus with a total area of 3.7 million square meters, 8000 employees and an annual sales volume of RMB 10 billion. As a national key enterprise, TYHI has been dubbed a “national treasure” and “trailblazer of the national economy” by various industry experts in China.

TYHI's main products' scope covers excavation equipment, lifting equipment, forging and rolling equipment, coke oven equipment, coal chemical equipment, train wheels and axles, gear drive equipment, wind power generating equipment, oil film bearings, forgings and castings, offshore equipment and project contracting. Our products are widely used in metallurgy, mining, energy, transportation, aeronautics, chemistry, rail, shipbuilding, and environmental protection industries.

TYHI's strength is in research and development. Many of the products we have designed and manufactured have filled niches in the domestic market. We have been awarded China National Gold Medals on more than one occasion and have received recognitions of excellence for 360 national and international accolades. In addition, our products have been exported to more than 50 countries and regions such as the USA, India, Germany and South Korea.



太原重工齿轮传动分公司简称太重齿传，是太重机械制造链中的核心环节，在初期只为太重主机配套优质可靠的齿轮箱，随着60多年的不断奋斗和发展，现拥有了从设计研发到冶炼、铸造、锻造、热处理、焊接、机械加工、装配试车、检测计量和包装运输等配套齐全的产品开发制造体系，成为了生产钢铁、矿山等传统领域大型重载齿轮箱及风电、海工、轨道等新兴行业高技术含量齿轮箱的专业制造企业。目前，太重齿传生产的各种齿轮箱已成为既满足太重主机配套，又面向国内、国际市场的主流产品。

主要产品有：起重机齿轮箱、大型矿用挖掘机齿轮箱、大型炼钢转炉及倾动装置、管轧机齿轮箱、线棒材及板带材轧机成套设备和齿轮箱、兆瓦级风电增速齿轮箱、高速动车组和城市轨道轮对齿轮箱、海工升降齿轮箱、磨机齿轮箱以及标准齿轮箱和其它产品。

TYHI Gear Transmission Sub Co. called TYHI-Gear is the core part of TYHI's manufacturing chain. In the beginning of its establishment, TYHI-Gear only supplied high quality gearboxes for TYHI's main equipments. Through continuous hard work for over 60 years, TYHI-Gear has become the specialized manufacturer in heavy-duty gearboxes for traditional industries such as steel and mining, and other high-tech transmission devices for new industries such as wind power offshore engineering and bullet train. It owns the integrate production system including research, design, smelting, casting, forging, heat treatment, welding, machining, assembling, commissioning, inspection, measuring, packaging and transportation. Up to now, TYHI-Gear's various gearboxes have been supplied both to the products of TYHI and to the domestic and international markets.

Main products: gearboxes used in cranes, excavators, large steel making converter tilting devices, rolling mills, wind power, motor trains and subways, offshore oil drilling platforms, grinding mills and standard gearboxes etc.



# Research and Development 科研开发



设计研究所  
Design & Research Institute



与国外专家技术交流  
Technical Exchange with Foreign Experts



德国连克培训  
Training by RENK Germany

太原重工技术中心为国家级技术中心，设有起重设备、轧钢设备、锻压设备、挖掘设备、齿轮传动设备、油膜轴承、煤化工、铸锻件及热处理等专业研究机构，具备机、电、液、传为一体的研发能力。其中，齿轮传动设计研究所，拥有研发设计和工艺技术人员70余人，包括教授级高工、高级工程师20余人。

从八十年代初开始，太重齿传先后同美国、德国、日本、意大利、奥地利等国的知名企业进行技术交流与合作，通过研发新产品和新技术，培养了能独立设计各种成套齿轮箱的专业设计研发队伍，应用国外先进设计软件，保持与多家科研机构及院校密切合作，对产品进行动态建模分析，实现最优化设计。

TYHI owns a state approved Technical Center. TYHI Technical Center has respective departments specialized in lifting equipment, rolling mill, forging equipment, excavation equipment, gear drive equipment, oil film bearing, coal chemical equipment, forging and casting, heat treatment and so on. It is capable of complete general contracting for mechanical, electrical, hydraulic and gear drive structures. TYHI-Gear Transmission Designing Institute has more than 70 design engineers and process engineers including over 20 senior engineers and professor senior engineers.

Since early 1980s, TYHI-Gear has started technical cooperation with famous companies from different counties such as the USA, Germany, Japan, Italy and Austria, to research and develop new products and technologies. With years of experience, TYHI-Gear has built its own professional design team which is capable of designing complete sets of gearboxes independently. It uses advance foreign design software, keeps closely cooperation with several research institutes and universities, analyses products by dynamic modeling and optimizes the design.



行星架有限元分析  
FEM Analysis for Planet Carrier

齿轮分析计算  
Gear Analysis and Calculation

# Qualification 资质荣誉

今天的质量和服務就是明天的市場

Today's quality and service equal to future's market.

质量是企业的生存之本，我们严格按照ISO9001质量认证体系对产品生产的全过程进行管理和控制。

Quality is foundation. The overall production process is strictly supervised and controlled by ISO9001.



ISO9001证书  
ISO9001 Certificate



OHSAS18001 证书  
OHSAS18001 Certificate



ISO14001 证书  
ISO14001 Certificate



国际焊接企业认证  
International Welding  
Engineer Certificate



1.5MW、3.6MW风电增速器  
德国GL认证  
1.5MW、3.6MW Wind Power  
Gearbox German GL Certificate



1.5MW、2MW风电增速器型式  
认证  
1.5MW、2MW Wind Power  
Gearbox Type Certificate



实验室认证（国际互认）  
Laboratory Certificate  
International Mutual Recognition



测量管理体系认证  
Measuring Management  
Systems Certificate



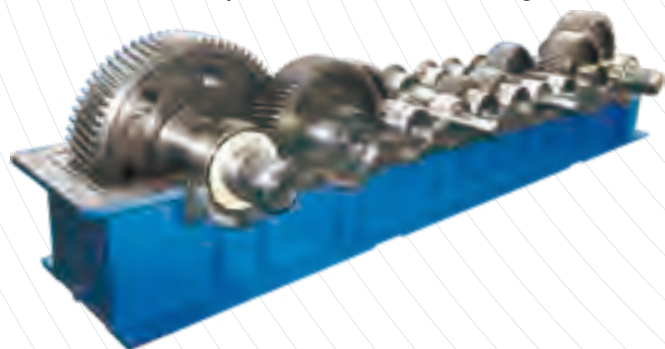
## Gearbox For Metallurgical Crane, Hydropower Overhead And Gantry Crane 冶金起重机、水电站桥机和门机用减速机



480t铸造起重机主起升减速机  
Main Hoist Gearbox for 480t Teeming Crane



450t铸造起重机主起升行星减速机  
Main Hoist Planetary Gearbox for 450t Teeming Crane



铸造起重机主起升减速机  
Main Hoist Gearbox of Teeming Crane

太重是世界大型起重机制造业最多的企业，专业制造大型冶金、桥式、门式及特种起重机，已占领中国300t以上冶金起重机的绝对市场，产品远销亚洲、美洲、欧洲、大洋洲、非洲，出口到印度、韩国、沙特、澳大利亚、哥伦比亚、巴基斯坦等20多个国家和地区。

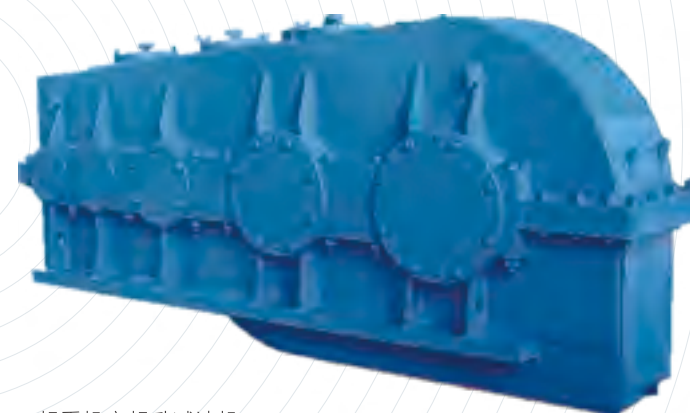
太重齿传为三峡水电站1200t桥式起重机配套的主起升齿轮箱，长9m，重67.5t，获得国家专利；为国内外各大钢厂生产的100t-500t大型冶金起重机主/副起升齿轮箱、大/小车运行齿轮箱，采用行星、平行轴及棘齿轮等多种结构，优化设备性能；为龙羊峡水电站500t门式起重机生产的齿轮箱，技术性能均达到世界先进水平。其中，为铸造起重机配套的提升、运行齿轮箱已形成系列产品。

TYHI is the manufacturer with the most achievement in heavy-duty crane production in the world, specialized for metallurgical, overhead, gantry and special cranes. TYHI cranes have occupied all the markets for metallurgical cranes with capacity over 300t in China and been exported to more than 20 countries and locations across Asia, America, Europe, Oceania, and Africa such as India, South Korea, Saudi Arabia, Australia, Colombia, Pakistan.

TYHI-Gear has produced the main hoist gearbox for 1200t overhead crane used in Three Gorges Project and obtained the national patent for it which is 9m long and 67.5t weight. TYHI-Gear has supplied the main/auxiliary hoist gearboxes and long/cross travel gearboxes for 100t-500t metallurgical cranes to big steel companies at home and abroad, adopting planetary, parallel shaft and ratchet-gear structures to optimize equipment performance. It has also produced gearbox for 500t gantry crane. Gearboxes for teeming crane have formed series of products.



1300t桥式起重机主起升减速机  
Main Hoist Gearbox for 1300t Overhead Crane



起重机主起升减速机  
Main Hoist Gearbox of Crane



小车运行减速机  
Crane Trolley Gearbox



520t铸造起重机  
520t Teeming Crane



大车运行减速机  
Crane Travel Gearbox





# Large Mining Excavator Gearbox 大型矿用挖掘机减速机



WK-75型挖掘机行走行星减速机  
WK-75 Excavator Planetary Travel Gearbox



WK-27型挖掘机提升减速机  
WK-27 Excavator Hoist Gearbox



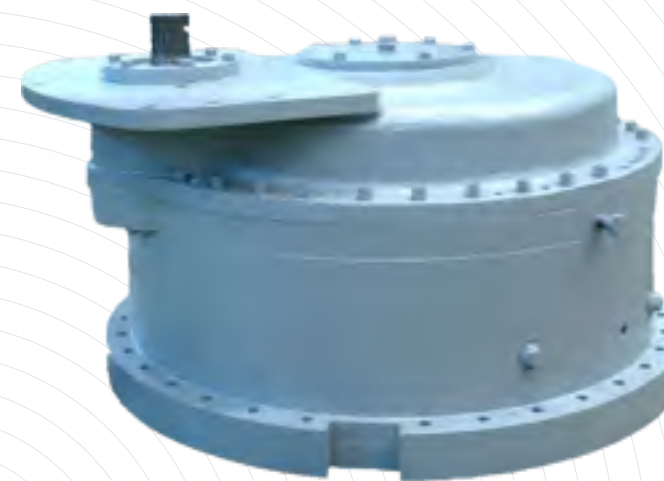
挖掘机回转齿圈  
Excavator Slewing Girth Gear

太重是中国最大的大型挖掘设备制造企业，产品已形成4 m<sup>3</sup>、10 m<sup>3</sup>、12 m<sup>3</sup>、20 m<sup>3</sup>、27 m<sup>3</sup>、35 m<sup>3</sup>、55 m<sup>3</sup>到目前世界上最大的75 m<sup>3</sup>全系列矿用挖掘机，并出口到俄罗斯、南非、智利、蒙古、印度、巴基斯坦、缅甸、秘鲁、哈萨克斯坦等国家。

太重齿传生产的挖掘机行走、提升、回转、推压机构主传动装置已达万台套。其中，12 m<sup>3</sup>~75 m<sup>3</sup>挖掘机的回转和行走齿轮箱采用了行星结构，具有结构紧凑、传递扭矩大、传动效率高、传递平稳等特点。齿轮箱均由太重齿传自主研发，具有完全自主知识产权。

TYHI is the largest manufacturer of heavy-duty excavator in China. It has produced mining excavators from 4 m<sup>3</sup>, 10 m<sup>3</sup>, 12 m<sup>3</sup>, 20 m<sup>3</sup>, 27 m<sup>3</sup>, 35 m<sup>3</sup>, 55 m<sup>3</sup> to the largest excavator of 75 m<sup>3</sup> in the world. TYHI excavators have been sold both in China and abroad to locations such as Russia, South Africa, Chile, Mongolia, India, Pakistan, Myanmar, Peru, and Kazakhstan.

TYHI-Gear has produced more than 10,000 sets of traveling, lifting, slewing and pushing gearboxes for excavators. The traveling and slewing gearboxes for 12 m<sup>3</sup>~75 m<sup>3</sup> have the features of compact structure, high torque and transmission efficiency, and stable transmission by adopting planetary structure. All gearboxes are developed by TYHI Gear with completely independent intellectual property rights.



WK-75型挖掘机回转行星减速机  
WK-75 Excavator Planetary Slewing Gearbox



WK-75型挖掘机提升减速机  
WK-75 Excavator Hoist Gearbox



WK-75型挖掘机  
WK-75 Excavator



挖掘机行星减速机负荷试车台  
Loading Test Bench for Excavator Planetary Gearbox





## Large Steelmaking Converter and Tilting Device 大型炼钢转炉及倾动装置



350t 转炉倾动装置  
350t Converter Tilting Device



使用中的转炉成套设备  
Converter in Operation



转炉装配现场  
Converter Assembly Site

为适应中国钢铁行业的迅速发展，满足转炉吨位不断提高的市场需求，太重齿传依靠自身优势，通过与西马克、奥钢联等世界知名企业合作，成功开发出大型炼钢转炉成套设备和中国最大的转炉倾动装置。

太重转炉成套设备规格从30t到350t，主要包含转炉炉壳、炉体支承装置、托圈、耳轴、轴承座装置、转炉倾动装置、润滑系统、旋转接头、水冷却系统、挡渣板、防热罩、转炉倾角指示器等。太重已向国内市场提供近百套转炉成套设备，可根据用户要求，进行不同容量、不同结构的转炉成套设备的设计与制造。

In order to meet the rapid development of steel industry and continuously increasing market requirement of converter capacity in China, TYHI-Gear has successfully developed complete set of large converter and the largest converter tilting device in China by its own advantages, through cooperation with world famous companies such as SMS, VAI.

TYHI-converter rang from 30t to 350t, consist of converter shell, body support unit, backing ring, trunnion, bearing block, tilting device, lubrication system, rotating joint, water cooling system, slag trap, heat shield, tilt angle indicator etc. TYHI has supplied over one hundred sets of converter to domestic market. Moreover, TYHI is able to design and manufacture converters according to clients' specification.



350t 转炉倾动装置  
350t Converter Tilting Device



250t-300t转炉倾动装置  
250T Converter Tilting Device



275t转炉倾动装置  
275t Converter Tilting Device

太重倾动装置从30t-350t已形成系列产品，主要采用扭力杆和弹簧-压杆两种结构，200t以上倾动装置在中国市场占有率达80%以上；2003为武钢生产的275t转炉倾动装置，采用了行星结构；2005年为马钢设计制造的300t转炉倾动装置，填补了国内空白，获国家科技进步奖；2007年为韩国现代制铁设计制造的320t转炉倾动装置，开创了大型转炉倾动装置出口海外的先河；2013年为宝钢设计制造的350t转炉倾动装置，是目前国内最大的转炉倾动装置。近年来，太重先后为马钢、首钢、韩国现代、日照和宝钢设计制造了14套300t以上的倾动装置，占领了国内300吨以上倾动装置的绝对市场。

TYHI-tilting device range from 30t to 350t, adopting two main structures: Torque Bar and Spring-Compression Bar. The market share of TYHI-tilting device over two hundred tons has reached over 80% in China: 275t tilting device supplied to Wuhan Steel in 2003 adopted planet structure; 300t tilting device supplied to Maanshan Steel in 2005 was the first of its type in domestic market and had won a national prize for scientific progress; 320t tilting device supplied to South Korea's Hyundai Steel in 2007 created a marketing pioneer of large converter tilting device exported overseas; 350t tilting device supplied to Bao Steel in 2013 which is the biggest tilting device in China. In recent years, TYHI has designed and manufactured 14 sets of tilting device with the capacity over 300t for domestic and overseas customers, and occupied the market of tilting device over 300t in China.



使用中的倾动装置  
Tilting Device in Operation



# Tube Mill Gearbox

## 管轧机减速机



Φ1000穿孔机双分流减速机  
Φ1000 Double Shunt Piercing Gearbox



12机架定径机减速机  
12 Stands Sizing Mill Gearbox



太重是全球最大的无缝钢管设备生产基地，设计制造的具有自主知识产权的ASSEL热轧无缝钢管生产成套设备、Accu-Roll热轧无缝钢管生产成套设备、三辊连轧无缝钢管生产成套设备和大口径无缝钢管生产成套设备已形成系列产品，轧管规格从Φ48.3mm至目前世界上穿孔直径最大的Φ2000mm。

TYHI is the world largest production base for seamless steel pipe mill. Four products have been designed and manufactured by TYHI with independent intellectual property rights, namely, ASSEL hot rolling seamless pipe production equipment, Accu-Roll hot rolling seamless pipe production equipment, 3-roll continuous rolling production equipment and heavy caliber seamless pipe production equipment. They can produce seamless pipe with diameter of Φ48.3mm to the largest diameter of Φ2000mm in the world.



Φ273三辊管轧机减速机  
Φ273 Three-roller Tube Rolling Mill Gearbox

Φ170管轧机减速机  
Φ170 Tube Rolling Mill Gearbox



Φ180三辊连轧管机组  
Φ180 3-roll Continuous Rolling Mill



Φ177管轧机减速机  
Φ177 Tube Rolling Mill Gearbox



脱管机减速机  
Extracting Mill Gearbox

太重齿传为太重轧管设备生产的配套齿轮箱机组代表了当今国际先进水平。同时，太重齿传可为国内外各大钢管企业设计制造用于管坯移送装置、穿孔机、芯棒限动、连轧机、脱管机、定径机、冷床、矫直机等各种设备的专用齿轮箱。

TYHI-Gear has produced gearboxes for TYHI's rolling seamless pipe production equipments representing the advanced world level. Moreover, TYHI-Gear is able to design and manufacture custom gearboxes used in various equipments for clients at home and abroad such as pipe billet transmission device, puncher, mandrel-retained, continuous mill, extracting mill, sizing mill, cooling mill and straightener.



Φ460模块化组合式定径机减速机  
Gearbox for Φ460 Modularization Combined Type Sizing Mill



## Complete Equipment and Gearbox for Wire & Bar Mill, Plate & Strip Mill 线棒材及板带材轧机成套设备及减速机



5m宽厚板定尺剪减速机  
Size Shear Gearbox for 5m Wide and Heavy Plate Mill



1780热轧飞剪减速机  
Gearbox for 1780 Hot Rolling Flying Shear



1780热轧卷曲机减速机  
Gearbox for 1780 Hot Rolling Crimping Machine

为满足国内外钢铁生产企业的需要，太重齿传设计制造了TZBZ型板带材减速机和TZXB型线棒材轧机减速机系列产品，具有技术先进、结构新颖、运转平稳、安全可靠等优点，完全满足低速、重载、冲击负荷大、冲击次数频繁、连续工作的工况要求。

太重生产的板带材减速机主要包括板带材轧机主传动减速机、卷曲机、飞剪、定尺剪、双边剪、剖分剪减速机等；线棒材轧机减速机主要包括棒材轧机主传动减速机、高速线材精轧机减速机等。

近年来，太重着力开发成套设备生产线，先后为山东、河北用户提供140万吨棒材成套生产线、 $\Phi 950\text{mm}$ 精品带钢和 $\Phi 850\text{mm}$ 不锈钢带钢生产工程。

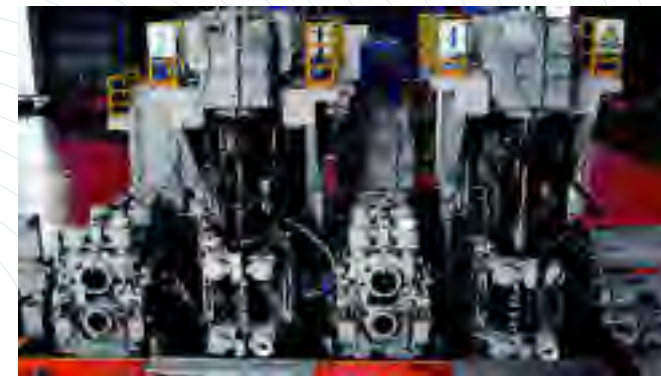
In order to meet the demands of steel production companies in domestic and overseas market, TYHI-Gear has designed and manufactured TZBZ series of gearboxes for plate and strip mill as well as TZXB series of gearboxes for wire and bar mill. They have features of advanced technology, new structure, stable operation, safety, reliability, and completely meet the working condition requirements such as low speed, heavy duty, large impact load, frequent impact, continuous work.

TYHI's gear drive products for plate and strip mill include main drive gearbox, crimping machine gearbox, flying shear gearbox, cut-to-length line gearbox, double-side trimming shear etc. Products for wire and bar mill include main drive gearbox used in bar mill, high-speed finish rolling gearbox for wire mill.

In recent years, TYHI has developed complete production equipments. It has supplied 1.4 million tons bar production line,  $\Phi 950\text{mm}$  strip mill and  $\Phi 850\text{mm}$  stainless strip mill projects to customers in Shandong and Hebei province.



140万吨棒材成套生产线  
1.4 Million Tons Annual Output Bar Mill



线棒材轧机立式减速机  
Vertical Gearbox of Wire & Bar Mill



1780热轧F2轧机主减速机  
Main Gearbox for 1780 F2 Hot Rolling Mill



西马克机型线棒材轧机减速机  
Gearbox for SMS Type Wire & Bar Mill



波梅尼机型线棒材轧机减速机  
Gearbox for Pomini Type Wire & Bar Mill

伞齿轮箱  
Bevel Gearbox



## Wind Power Gearbox with MW Series 兆瓦级风电齿轮箱



3MW 风电增速器  
3MW Wind Power Gearbox

风机轴  
Wind Turbine Shaft

通过引进德国RENK公司先进技术，目前太重已成功开发1.5MW-5MW等各类海陆风电增速齿轮箱系列产品，实现批量生产并出口海外。主要产品包括双馈和半直驱增速齿轮箱、偏航变桨齿轮箱、主轴和其它传动件。增速齿轮箱的结构分为单行星结构、双行星结构、齿圈驱动等几种结构。太重风电增速齿轮箱获得中国船级社和德国劳氏船级社型式认证。

Through the introduction of advanced technology from RENK Germany, TYHI-Gear has developed 1.5MW-5MW series of wind power gearboxes for both land and sea use, achieved batch production and exported overseas. Products include double-fed and semi-direct driving gearbox, yawing rebellion gearbox, main shaft and other gearing products. Gearbox adopted several structures such as single-planet, double-planet and ring gear driving structure. Our wind power gearboxes have obtained type certification by China Classification Society and Germanischer Lloyd.



8MW风电增速器负荷试车台  
On-load Test Bench for 8MW Wind Power Gearbox



风电增速器装配现场  
Assembly Site for Wind Power Gearbox



5MW 风电增速器  
5MW Wind Power Gearbox



1.5MW 单行星风电增速器  
1.5MW Single Planet Wind Power Gearbox



3.6MW 风电增速器  
3.6MW Wind Power Gearbox



2MW 风电增速器  
2MW Wind Power Gearbox



# Locking Device of Jacking System for Auto-lifting Petroleum Drilling Platform

## 自升式钻井平台升降锁紧装置



升降单元 Jacking Unit



爬升齿轮箱 Climbing Gearbox



升降装置加载试验 Load Test Bench for Jacking System

太原重工齿轮传动分公司自行开发设计出250—450英尺自升式钻井平台、采油平台、生活平台、修井平台、多功能辅助平台等升降锁紧装置。

TZ GEAR has developed, designed and manufactured the series of jacking & locking devices for 250 to 400 inches auto-lifting petroleum drilling platforms, oil collecting platforms, living platforms, repairing platforms, multiple-function assisted platforms and so on.



爬升齿轮 Climbing Gear



锁紧蜗杆减速机 Locking Worm Gearbox



升降固桩架 Jacking Fixed Frame



万吨水压机锁紧加载试验  
Load Test for Locking Device on 12,500 tons Hydraulic Press



安装升降装置 Installation of Jacking System



锁紧试验台 Test Bench for Locking Device



# Grinding Mill Gearbox

## 磨机减速机



水泥磨齿轮箱  
Cement Grinding Mill gearbox



发电厂立磨齿轮箱  
Vertical Grinding Mill Gearbox for Power Station



磨煤机齿轮箱

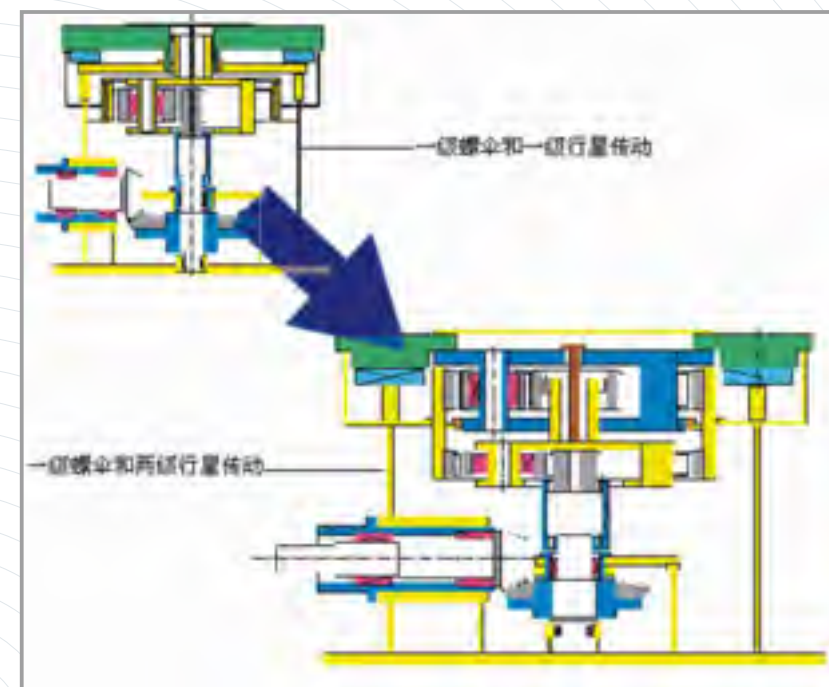
太重磨机齿轮箱包括：立式磨机齿轮箱、中心传动磨机齿轮箱、边缘传动磨机齿轮箱等。JM系列是太重特别研制的立式磨机齿轮箱，配备专用油站，具有结构新颖、抗冲击、抗震动、体积小、重量轻、安全可靠、使用寿命长的特点，广泛应用于石灰石、水泥塑料、矿石、矿渣、石膏、煤的粉碎。

150KW-1500KW，螺旋伞+单行星结构；  
1500KW-3000KW，螺旋伞+平行轴+单行星结构，或螺旋伞+双行星结构；  
3000KW-5000KW，螺旋伞+双行星结构。

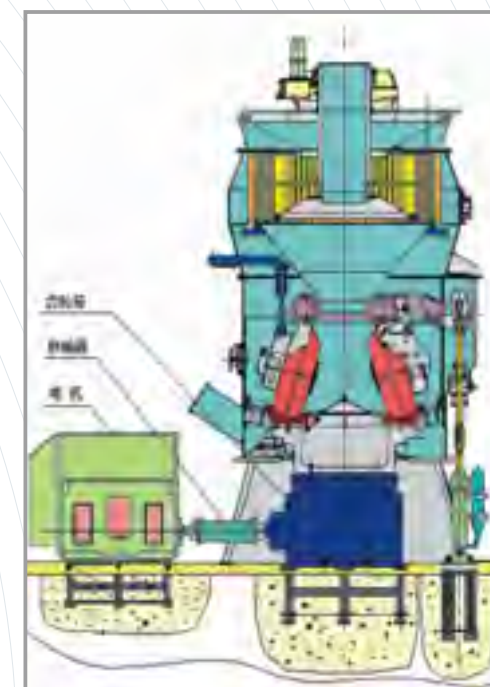
TYHI-grinding mill gearboxes include: vertical, center-drive, edge-drive gearboxes etc.

JM series is the special vertical grinding mill gearbox developed by TYHI, equipped with dedicated oil station, with the features of new structure, impact resistance, vibration resistance, small size, light weight, safe and long service life. It has wide application to grinding lime, cement plastics, ore, slag, plaster and coal.

150KW-1500KW, Spiral Gear + Single Planet;  
1500KW-3000KW, Spiral Gear + Parallel Shaft + Single Planet, Or Spiral Gear + Double Planets;  
3000KW-5000KW, Spiral Gear + Double Planets.



立式磨机齿轮箱机型  
Vertical Grinding Mill Gearbox Type



立式磨机传动原理  
Transmission Principle of Vertical Grinding Mill



立磨齿轮箱试车  
Test Run for Vertical Grinding Mill Gearbox



磨机  
Grinding Mil



## Other Products 其他产品



联轴器  
Coupling



皮带输送机减速机  
Belt Conveyor Gearbox

太重为众多行业提供各种非标/标准齿轮箱及其它产品，如皮带输送机齿轮箱、煤化工炉篦齿轮箱、刮板机齿轮箱、榨糖机齿轮箱、水泥行业大齿圈及轧机鼓形齿联轴器等。

此外，太重成功研发了海上自升式石油钻井平台齿轮齿条式升降装置，具有技术先进、运行可靠等特点。针对陆地钻井设备，太重开发了石油钻机顶驱齿轮箱，已批量供货。

TYHI has supplied various kinds of standard/non-standard gearbox and other products to many industries, such as grinding mill gearbox, belt conveyer gearbox, coal chemical fire grate gearbox, scraper gearbox, sugar mill gearbox, girth gear for cement industry and couplings.

In addition, TYHI has successfully developed the Gear Rack Lifting System for self-elevating petroleum drilling platform which has advanced technology and performs stable operation. For on-land drilling, TYHI has also developed the Top Drive Gearbox and achieved batch production.



双分滚榨糖机齿轮箱  
Double Shunt Sugar Mill Gearbox



轧机鼓形齿联轴器  
Crown Gear Coupling for Rolling Mill



刮板机减速机  
Gearbox for Scraper



煤化工炉篦减速机  
Coal Chemical Fire Grate Gearbox



平行轴式榨糖机齿轮箱  
Parallel Sugar Mill Gearbox



石油顶驱齿轮箱  
Top Drive Gearbox for Petroleum Drilling



水泥厂回转大齿圈  
Slewing Girth Gear for Cement Mill



## Detection And Technological Equipments 检测及工艺装备



125MN 锻造液压机  
125MN Forging Press



热处理渗碳炉群  
Heat Treatment Carburizing Furnace Group



5x20m 数控天桥铣  
5x20m CNC Universal Milling Center

太重拥有包括冶炼、铸造、锻造、热处理、焊接、机械加工、总装调试、检测计量和包装运输等配套齐全、工艺先进的各类装备3309台，其中重点设备202台，进口设备258台。

太重拥有国家级的理化检定中心，中心下设无损检测、力学性能、金相、化学、长度计量、仪表计量等专业实验室，拥有测量设备200余台。主要设备有超声波探伤仪、射线探伤仪、磁粉探伤仪、疲劳试验机、数字光学显微镜、电液伺服万能试验机、冲击试验机、FT全自动显微硬度测试系统、ICP原子发射光谱仪、原子吸收光谱仪、红外硫碳分析仪等。

TYHI owns various kinds of advanced equipments for in smelting, casting, forging, heat-treatment, welding, machining, assembling and commissioning, inspecting, measuring, packing and transportation. The total quantity of these equipments reaches to 3309 sets, including 202 sets of key equipment and 258 sets of imported equipment.

TYHI has state approved center for physical and chemical test which consists of Non-destructive testing Lab, Mechanical Property Lab, Metallographic Lab, Chemistry Lab, Length Measuring Lab, Instrument Measuring Lab and others lab. It owns 200 sets of measuring equipment with main equipment as: Ultrasonic fault detector, Ray Defect Detector, Magnetic Defect Detector, Fatigue-Testing Machine, Digital Optical Microscope, Electro-Hydraulic Servo Universal Testing Machine, Impact tester, FT Fully Automatic Micro Hardness Testing System, ICP Atomic Emission Spectrometer, Infrared C-S Analyzer and etc.



Φ9m、Φ5m 滚齿机  
Φ9m、Φ5m Gear Hobbing Machine



2.5m 数控车铣中心  
2.5m CNC Lathe-Milling Center



3x8m 龙门铣  
3x8m Gantry Miller



材料性能检测设备  
Material Performance Inspection Equipment



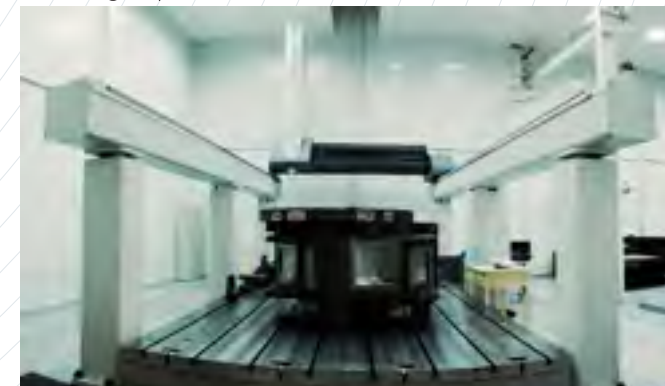
Φ630-Φ4000mm 磨齿机群  
Φ630-Φ4000mm Gear Grinding Group



卧式加工中心  
Horizontal Machining Center



2.5m 高速滚齿机  
2.5m High Speed Gear Hobber



三坐标检测仪  
Three-Dimensional Detector



## International Market 国际市场

太原重工齿轮传动产品的性能和质量是如今我们取得成功和提高信誉的基石。太原重工秉承“诚信开拓市场，质量创造品牌”的经营理念，与兄弟企业、社会各界和国际友人保持良好的交往与合作。在追求卓越、创建世界太重过程中始终以“产品一流、素质一流、服务一流”得到用户的认可和信赖。

澳大利亚 Australia  
法国 France  
德国 Germany  
印度 India  
印度尼西亚 Indonesia  
马来西亚 Malaysia  
巴基斯坦 Pakistan  
秘鲁 Peru  
沙特 Saudi Arabia  
南非 South Africa  
韩国 South Korea  
泰国 Thailand  
土耳其 Turkey  
阿联酋 United Arab Emirates  
英国 United Kingdom  
越南 Vietnam  
美国 USA  
巴西 Brazil  
台湾 Taiwan  
...

The performances and quality of TYHI's Gear Transmission products are the core stones for obtaining success and improving reputation. TYHI will adhering to the management concept of "sincerely expanding market, quality creates famous brand" have keep good exchange and cooperation with its brother enterprises, all sectors of society and international friends. It has obtained customers' approval and trust by always adhering to "first-class product, first-class quality and first-class service" during the process of creating the World TYHI.