



太原重工股份有限公司
TAIYUAN HEAVY INDUSTRY CO., LTD.

太重(天津)滨海重型机械有限公司
TZ (TIANJIN) BINHAI HEAVY MACHINERY CO., LTD.

地址: 天津市滨海新区临港经济区渤海五十路69号
电话: 0086-22-65666786
传真: 0086-22-65666700
邮箱: tzbh30@163.com
网址: www.tyhi.com.cn
邮编: 300452

Add: #69, Bohai 50 Road, Tanggu Harbor Economic Area,
Tianjin, The P.R. China
Tel: 0086-22-65666786
Fax: 0086-22-65666700
E-mail: tzbh30@163.com
Website: www.tyhi.com.cn
PostCode: 300452



太原重工股份有限公司
TAIYUAN HEAVY INDUSTRY CO., LTD.

太重(天津)滨海重型机械有限公司
TZ (TIANJIN) BINHAI HEAVY MACHINERY CO., LTD.



中国·天津
CHINA·TIANJIN

太重（天津）滨海重型机械有限公司
临港重型装备研制基地 鸟瞰图



立足港机设备精品制造

Based on Supply High-class Port Machinery

打造太重港机自主品牌

Creating TZ Independent Brand of Port Machinery

核心价值观

CORE VALUES

诚信 创新 精益 卓越

Integrity Innovation Refinement Excellence



太重滨海公司概况

TZBH Introduction

太重重工是中国重型机械行业第一家上市公司，实际控制人为太重集团，其前身为太原重型机器厂，始建于1950年，是中国自行设计建造的第一座重型机械制造企业。成立60多年来创造了360项国内外第一，累计为国家重点建设项目提供了1000余种，两万多套（套）装备，被誉为“国之瑰宝”和“国民经济的开路先锋”。为实现转型发展，公司于2008年成立了太重（天津）滨海重型机械有限公司（以下简称“太重滨海公司”），进军港口设备领域。

太重滨海公司是太原重工股份有限公司的全资子公司，位于天津滨海新区临港经济区，占地1500亩（100万平方米），拥有1000米码头岸线，建有1个重件出运码头（起吊能力1500T），4个5万吨级泊位，水底标高-13.5米。在保持传统产品优势的基础上，公司围绕港口机械设备领域，建有原材料处理、焊接成型、零部件加工、一喷二涂、装配成套、整体发运等设施，满足港口机械的生产研制要求。公司主要产品有门座式起重机、岸边集装箱式起重机、轨道集装箱龙门起重机、卸船机、堆取料机、造船门机、装船机、甲板起重机、甲板浮式起重机、甲板液压起重机、甲板折臂回转起重机等。

太重滨海公司的发展紧紧依托太重集团的雄厚实力，实现跨越和转型，形成具有自身特色的海工装备产品，公司将为太重实施“蓝海”战略做出应有的贡献，并为国家实施“海洋强国”战略奉献自己的力量。

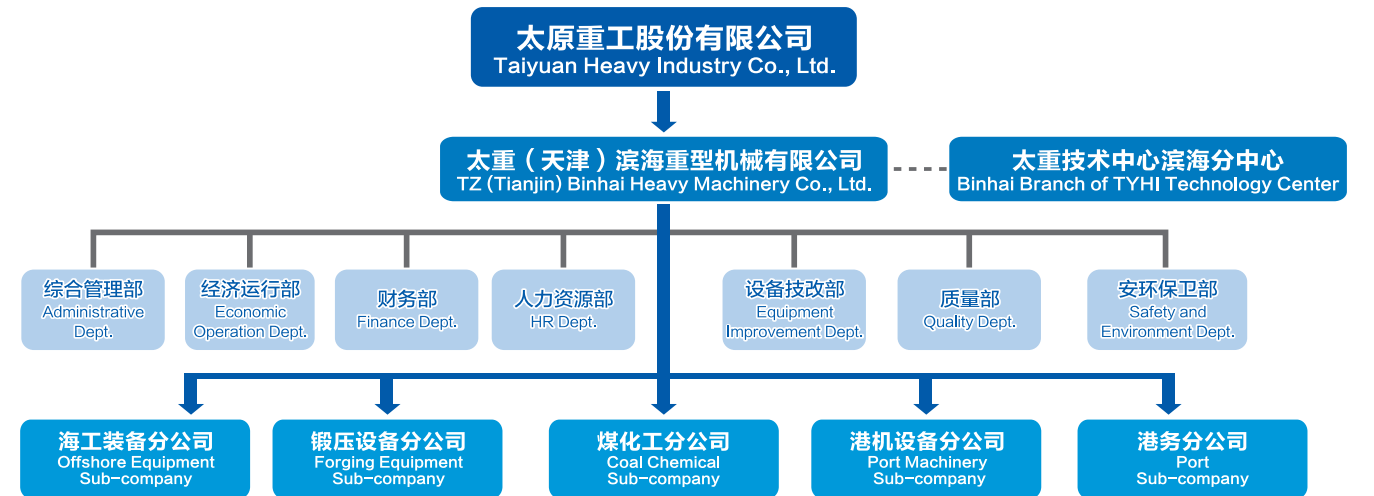
Taiyuan Heavy Industry is the first listed company in heavy machinery industry in China, its actual controller is Taiyuan Heavy Machinery Group, and its predecessor is Taiyuan Heavy Machinery Plant, which was founded in 1950 as the first heavy machinery manufacturing enterprise independently designed and constructed by Chinese government. Over 60 years since its establishment, Taiyuan Heavy Industry has created 360 No. 1s in domestic and abroad, and supplied more than 20,000 sets of equipment which in more than 1,000 types for major construction projects in China, so that it has been recognized as "national treasure" and "trailbreaker of national economy". In order to realize the transformation and development, the company established TZ (Tianjin) Binhai Heavy Machinery Co., Ltd. (hereinafter referred to as "TZBH") in 2008, entering into the port machinery field.

As a wholly-owned subsidiary of Taiyuan Heavy Industry Co., Ltd., TZBH is located in Tanggu Harbor Economic Zone in Binhai New Area of Tianjin, occupies an area of 1,500mu (1 million square meters), and possesses 1,000m dock shoreline, with the bottom elevation of berth at dock being TZBH deployed the equipments, like -13.5 meters. On the basis of maintaining the advantages of traditional products, TZBH deployed the equipment, Like raw material processing, welding molding, parts processing, a spray coating, assembly, the overall delivery and other facilities around port machinery and to meet the requirements of port machinery production development. The main products of TZBH include Portal Crane, Quayside Container Crane, Rail Mounted Gantry Crane, Rubber Tyred Gantry Crane (RTG), Ship Unloader, Stacker-reclaimer, Shipbuilding Gantry Crane, Ship Loader, Offshore Crane, Floating Crane, Hydraulic Slewing Crane, Knuckle Crane.

By virtue of the strength of Taiyuan heavy Machinery Group, TZBH has realized the leap-forward development and transformation, and formed the offshore engineering equipment products with unique characteristics. The company will make due contribution to the blue sea strategy implemented by Taiyuan Heavy Machinery Group, and will do its bit for the ocean-based development strategy implemented by China.

太重滨海公司组织机构图

TZBH Organization Chart



研发中心

Research & Development Center

太重滨海公司在天津滨海新区CBD——响螺湾中心商务区建有15000m²研发中心。中心拥有一流的研发团队100余人，其中从美国休斯敦外聘专家1名，从国内知名企业引进资深设计师数十人。几年来该团队先后与大连理工大学、哈尔滨工程大学、天津大学等科研院所建立良好的合作机制，通过新产品研制、关键技术攻关，最终将科研成果转化为新产品。

太重滨海研发中心主要从事门座式起重机、岸边集装箱式起重机、轨道集装箱龙门起重机、轮胎式集装箱门式起重机、卸船机、堆取料机、造船门机及关键配套设备的研究，通过自主创新与引进、消化、吸收，再创新相结合的方式，已经开发完成了门座式起重机、岸边集装箱式起重机、轨道集装箱龙门起重机、卸船机、堆取料机、造船门机，产品突破核心技术并形成自己的产品优势。

TZBH has set up a 15,000m² R&D Center in Xiangluowan which is the Central Business District (CBD) in Binhai New Area of Tianjin. The center owns first-class R&D teams composed of more than 100 engineers, including one offshore engineering expert employed from Houston USA and dozens of experienced designers employed from renowned enterprises domestically. Over past years, the center has set up good partnership with universities and scientific research institutions such as Dalian University of Technology, Harbin Engineering University, Tianjin University, CIMC RAFFLES Research Institute and Liaoning Petroleum Equipment Research Institute, and converted the results of scientific research into new products through research of new products and overcoming of key technical difficulties.

Mainly engaged in the research and development of Portal Crane, Quayside Container Crane, Rail Mounted Gantry Crane, Rubber Tyred Gantry Crane (RTG), Ship Unloader, Stacker-reclaimer, Shipbuilding Gantry Crane, and by means of independent innovation, introduction, digestion, absorption and re-innovation, the R&D Center of TZBH has developed Portal Crane, Quayside Container Crane, Rail Mounted Gantry Crane, Bridge Type Grab Ship Unloader, Bucket-wheel Stacker-reclaimer, Shipbuilding Gantry Crane, Products break through the core technology and form their own product advantages.

State award for invention	4	国家发明奖	■
National prize for progress in science and technology	14	国家科技进步奖	■
Science and technology achievement award	10	科技成果奖	■
Equipment development achievement	7	装备研制成果奖	■
Authorization for a patent for invention	123	授权发明专利	■
The patent for utility model	202	实用专利	■
Provincial science and technology progress prize	114	省部级科技进步奖	■
National gold prizes for quality products	3	国家优质产品金奖	■

质量管理 今天的质量和服務就是明天的市場

公司建立运行了严格完善的质量管理及控制体系，获得了ISO9001、国家实验室等国际质量管理体系认证证书，并与CCS、ABS船级社建立了良好的合作关系。



ABS美国船级社



ASME
美国机械工程协会



EC Module H1 Wheelset
EC质量体系认证

Quality Control Today's high quality and excellent service bring tomorrow's rewards.

TZBH sets up a strict quality control and management system, has got the certification of ISO 9001 and National Laboratory, and builds good cooperative relations with CCS and ABS.



测量管理体系认证证书
Measurement Management System Certificate



国家实验室认可证书
National Laboratory Accreditation Certificate



国家实验室认可证书
National Laboratory Accreditation Certificate



英国劳氏船级社



中华人民共和国特种设备制造许可证
(起重机械) 1



中华人民共和国特种设备制造许可证
(起重机械) 2



ISO9001质量管理体系认证证书
ISO9001 Quality Management System Certificate



国际焊接证书
International Welding Certificate



国际焊接证书
International Welding Certificate



ISO9001 国际标准质量体系认证
ISO9001 Certification



ISO9001 国际标准质量体系认证
ISO9001 Certification



ISO9001 国际标准质量体系认证
ISO9001 Certification



安全生产许可证
Safety Production License



职业健康安全管理体系认证
Authentication Certificate of
Vocational Health and Safety Management System



环境管理体系认证证书
Authentication Certificate of
Environment Management System

门座式起重机

Portal Crane



起重量 Lifting Capacity	t	吊钩 Lifting Hook		16/25	25/40	40	60 80
		抓斗 Grab		16	25	25	
幅度 Radius	m	Rmax		30/22	35/25	37	40
		Rmin		9.5	12	12	11
起升高度 Lifting Height	m	轨上 (H轨上) Above Rail	吊钩 Lifting Hook	22	28	28	45
			抓斗 Grab	15	20	20	
		轨下 (H轨下) Under Rail		15	18	18	8
起升速度 Hoisting Speed	m/min			50/25	60/30	55	Q≥40t 1~8 Q≥40t 1~15
变幅速度 Luffing Speed	m/min			50	52/45	45	15
回转速度 Slewing Speed	r/min			1.5	1.5	1.2	0.3
运行速度 Traveling Speed	m/min			25	27	30	30
轨距 Rail Span	m	S		10.5	10.5	12	12
基矩 Wheel Base	m	B		10.5	10.5	12	13
尾部旋转半径 Tail Turning Radius	m			8	8.5	8.5	10.5
门架净空高度 Clear Height of Portal	m	H		6	6.5	6.5	8
最大轮压 Max. Wheel Load	kN			250	350	350	280
电源 Power Supply		380V 50Hz		AC6000V 50HZ	AC10000V 50HZ	AC10000V 50HZ	

岸边集装箱起重机

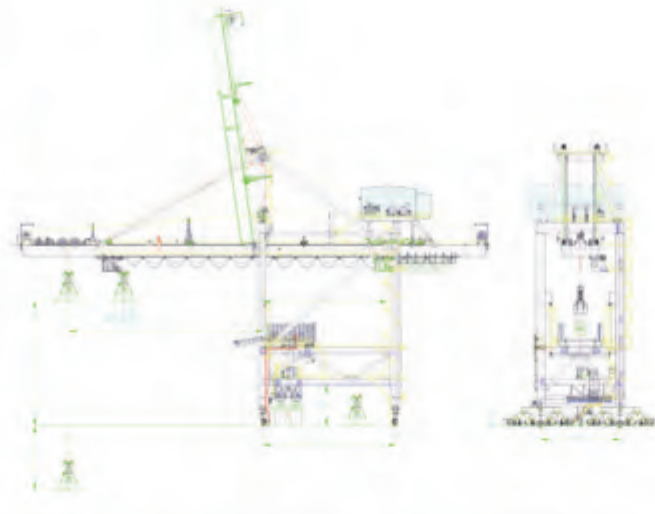
Quayside Container Crane



基本 参数 Basic Parameters	额定起重量 (t) Rated Lifting Capacity		65	40.5	80	120
	吊钩下起重量 (t) Lifting Capacity Under Hook		78	50	100	80
	总起升高度 (m) Total Lifting Height	轨面以上 Above Rail	40	40	40	42
		轨面以下 Under Rail	18	17	20	18
	最大轮压 (kN) Max. Wheel Load	工作 Operational	520	310	1140	770
		非工作 Non-Operational	600	360	1350	950
	大车车轮数 (个) Number of Wheels		40	32	40	40
	门框内宽 (m) Inside Clearance Between Legs		≥18.3	≥18.3	≥18.3	≥18.3
	门框联系梁净高 (m) Clear Height of Middle Beam		>14.6	>12.5	>14.6	>14.6
	两缓冲器距 (m) Distance Between Gantry Bumpers		≤27	27	28	27
	前伸距 (m) Front Outreach		55	38	68	65
	后伸距 (m) Back Outreach		15	12	23	20
	轨距 (m) Rail Span		30	21	30	30
	小车运行方式 Type of Trolley		牵引式 Pull-rope	牵引式 Pull-rope	牵引式 Pull-rope	牵引式 Pull-rope
大梁形式 Type of Main Girder		双箱型梁 Double-box Girder	双箱型梁 Double-box Girder	双箱型梁 Double-box Girder	双箱型梁 Double-box Girder	
速度 参数 Speed (m/min)	起升速度 Hoisting Speed	满载 Full Load	50	70	90	80
		空载 No-Load	120	160	180	180
小车速度 Trolley Travel Speed		210	160	240	240	
大车速度 Gantry Travel Speed		45	45	60	45	
单程俯仰时间 (分) Boom Hoisting Time (One Way)		<6min	<5min	<6min	<6min	

桥式抓斗卸船机

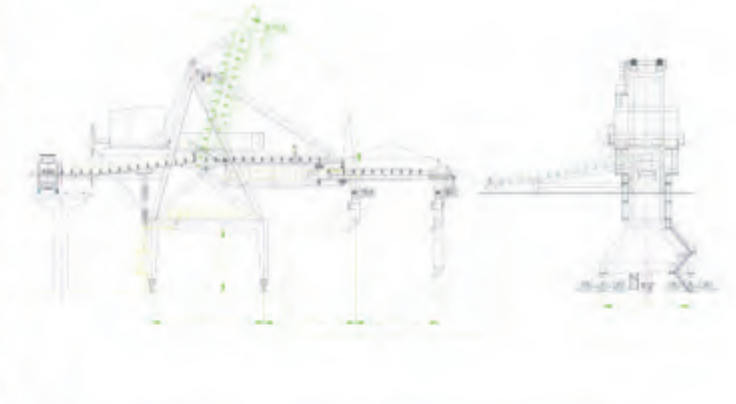
Bridge Type Grab Ship Unloader



生产率	Productivity	t/h	500	750	1250	1500	1800	2250	2750	3000
起重量	Lifting Cap.	t	12.5	20	36	36.4	46	55	64	70
速度 Speed	起升	Hoisting	m/min	100	150	110	150	160	150	160
	下降	Descending	m/min	100	150	165	150	180	210	190
	小车	Trolley	m/min	120	135	180	220	240	240	240
	大车	Gantry	m/min	20	20	25	25	25	20	25
前大梁俯仰		Boom Lifting Time	min	6	8	6	6	7	6	7
外伸距	海侧	Sea-side	m	22	23.5	30	35	45	43	44
	陆侧	Land-side	m	7	12	19	18	28	23	28
最大轮压		Max. Wheel Load	t	24	25	50	47	70	60	65
起升高度	轨上	Above Rail	m	18	21	25	25.5	29	24.3	28
	轨下	Under Rail	m	9	20	16.5	21	24	25	24
轨距	Rail Span	m	10.5	16	22	22	30	28	30	30
基距	Wheel Base	m	10.5	14	17	18	18	17	18	18
门框净高度		Clear Height of Portal	m	6	7.8	8.8	8.9	9.5	8.7	9.2
装机容量		Installed Capacity	kW	580	800	1250	1500	1800	2300	2500

装船机

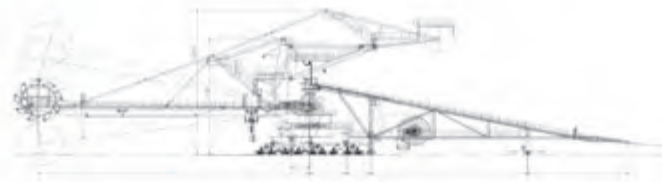
Ship Loader



额定生产率	Rated Capacity	t/h	1000	1500	6000
最大生产率	Max. Capacity	t/h	1150	1800	6700
臂架俯仰角度	工作范围	Loading Operating	度(°)	0°-8°	0°-8°
	最大仰角	Highest Position	度(°)	75°	64°
最大轮压	工作状态	Operational	t	20	44.6
	非工作状态	Non-Operational	t	20	36
伸缩行程		L1 Shuttle Head Traversing Length	m	10.5	17.8
最小前伸距		L2Min. Outreach	m	11.5	14.5
轨距 S		Span	m	14.15	10
基距 B		Wheel Base	m	11	11
皮带宽度		Belt Width	m	1.2	1.4
门框联系梁净高		H1Height of Middle Beam	m	7.8	9.25
速度参数	溜筒回转速度	Chute Rotation Speed	r/min	0-2	0-2
	臂架伸缩速度	Shuttle Head Traversing Speed	m/min	0-5	0-5
	皮带速度	Belt Speed	m/s	2.5	2.5
	大车速度	Gantry Travel Speed	m/min	0-20	0-20
俯仰时间		Boom Hoist Time One Way	min	6	6
装机总功率		Total Installed Power	kW	240	300

斗轮式堆取料机

Bucket-wheel Stacker-reclaimer



额定生产率(t/h) Productivity	堆料 Stacking Capacity	5000	7500	速度参数 Speed	斗轮转速(rpm) Bucket-Wheel Rotating Speed	5
	取料 Reclaiming Capacity	3500	3600		回转速度(rpm) Slewing Speed	0~0.11 0~45m/min
堆料高度(m) Stacking Height	轨上 Above Rail Top	14		斗轮电机 Bucket-Wheel Motors	悬臂皮带机速度(m/s) Boom Conveyor Speed	3.15
	轨下 Under Rail Top	2			尾车皮带机速度(m/s) Tripper Conveyor Speed	3.15
斗轮直径(m) Bucket-Wheel Diameter	8		8	斗轮电机 Bucket-Wheel Motors	功率(kw) Power	185
斗轮容积(m³) Bucket Volume(m³) 斗轮数量(个) Number of Buckets	0.77x9		0.75x9		转速(rpm) Rotating Speed	1500
回转半径(m) Slewing Radius	45		55	回转电机 Slewing Motors	功率(kw) Power	22x2
回转角度(°) Angle of Slewing	堆料 Stacking	±105°	±110°		转速(rpm) Rotating Speed	1500
变幅角度(°) Angle of Luffing	堆料 Stacking	-11°~+10°	-10°~+15°	变幅电机 Luffing Motors	功率(kw) Power	30
	取料 Reclaiming	-11°~+10°	-10°~+15°		转速(rpm) Rotating Speed	750
轨距(m) Span 基距(m) Wheel Base	轨距(m) Span	10	10	悬臂皮带机电机 Boom Conveyor Motors	功率(kw) Power	250
	基距(m) Wheel Base	10	10		转速(rpm) Rotating Speed	1500
回转支承型式 Type of Slewing Supporting	回转轴承 Slewing Bearing			尾车皮带机电机 Tripper Conveyor Motors	功率(kw) Power	—
最大轮压(kN) Maximal Wheel Load	400		250		转速(rpm) Rotating Speed	—
外形尺寸(m³m³m) Boundary Dimension	101.76x11.08x30.208			大车电机 Gantry Motors	功率(kw) Power	7.5x18
物料种类 Material Category	铁矿石 Iron Ore				转速(rpm) Rotating Speed	1000

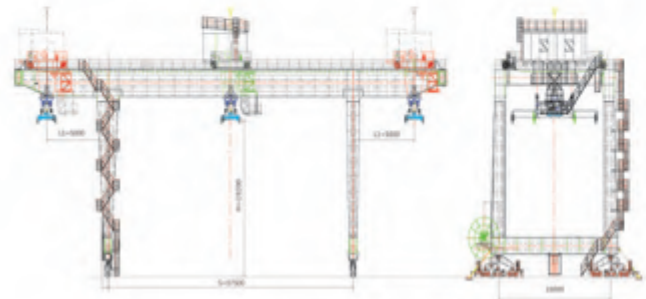
造船门机

Shipbuilding Gantry Crane



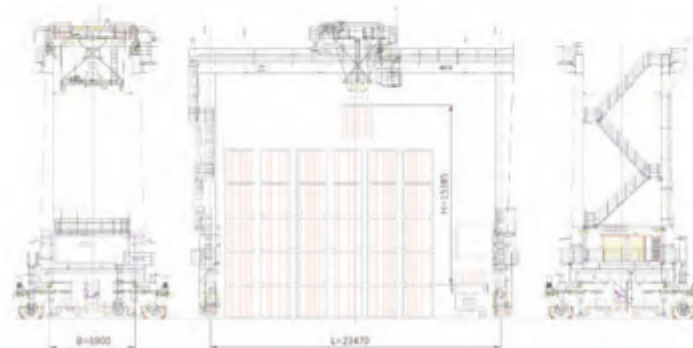
项目 Item	单位 Unit	150t-82m	200t-94m	320t-122m	800t-160m	
额定翻身重量 Rated Weight of Turnover	t	150	200	320	800	
跨距 S Rail Span	m	82	94	122	160	
基距 B Wheel Base	m	20	24	30	35	
上小车 Upper Trolley	起重能力 Lifting Capacity	t	2x75	2x100	2x160	2x440
	起升速度 Hoisting Speed	m/min	0.2-5-8-10	0.2-5-10	0.15-6	0-8-20
	行走速度 Traversing Speed	m/min	1-25	0.6-20-30	0.3-30	0-40
下小车 Lower Trolley	起重能力 Lifting Capacity	t	主 Main120/ 副 Auxiliary20	主 Main150/ 副 Auxiliary30	主 Main200/ 副 Auxiliary20	主 Main450/ 副 Auxiliary30
	起升速度 Hoisting Speed	m/min	主 Main0.2-5-8-10/ 副 Auxiliary18	主 Main0.2-5-10/ 副 Auxiliary0.2-10	主 Main0.15-6/ 副 Auxiliary0.2-20	主 Main0-8-20/ 副 Auxiliary16-32
	行走速度 Traversing Speed	m/min	1-25	0.6-20-30	0.3-30	0-40
起升高度 Lifting Height	H 上小车 H Upper Trolley	m	轨上 Above Rail Top58/ 轨下 Under Rail Top12.5	轨上 Above Rail Top60/ 轨下 Under Rail Top6	轨上 Above Rail Top75/ 轨下 Under Rail Top9	轨上 Above Rail Top73/ 轨下 Under Rail Top16
	H1 下小车(主) H1 Lower Trolley Main	m				轨上 Above Rail Top75/ 轨下 Under Rail Top13.3
	H2 下小车(副) Lower Trolley Auxiliary	m				轨上 Above Rail Top76/ 轨下 Under Rail Top13.3
行走速度 Traveling Speed	m/min	1-30	0.6-30	0.4-30	0-45	
轮压 Wheel Load	kN	≤ 420	≤ 520	≤ 750	≤ 750	
自重 Crane Weight	t	1066	1520	2980	4000	
装机容量 Installed Power	kW	650	790	1110	3500	
电源 Power Supply	\	AC10kV 50Hz	AC10kV 50Hz	AC6kV 50Hz	AC10kV 50Hz	

轨道式集装箱龙门起重机 Rail Mounted Gantry Crane



吊具下起重量 Lifting Capacity Under Spreader	60t	35t	起升高度 Lifting Height	19.2m 17.15m
两端最大工作有效悬臂 L.I Outreach From Rail	5m	5m	起升速度 Hoisting Speed	18~30m/min 空18m/min 满50m/min
轨距 S Rail Span S	轮23.47m 轨30m	37.5m	小车运行速度 Trolley Travel Speed	70m/min 70m/min
基距 B Wheel Base B	轮6.9m 轨16m	16m	大车运行速度 Gantry Travel Speed	40m/min 空50m/min 满135m/min
大车最大轮压 Max. Wheel Load	轮425kN 轨425kN	~225kN	供电 Power Supply	380V 50Hz 轮柴油机
			总装机容量 Total Installed Power	317kW 轮580KW 轨580kw

轮胎式集装箱门式起重机 Rubber Tyred Gantry Crane



基本参数 Basic Parameters	吊具下额定起重量 (t) Lifting Capacity	40.5	起升电机 Hoist Motor	个数 (个) Number	1
	起升高度 H (t) Lifting Height	18.20		功率 (kW) Power	180
	跨度 L (m) Rail Span	23.47		转速 (r/min) Rotating Speed	920/1840
	基距 B (m) Wheel Base	6.9		个数 (个) Number	2
速度参数 Speed	堆箱层数 (层) Stacking Height (Containers)	6	小车电机 Trolley Motor	功率 (kW) Power	2*15
	过箱层数 (层) Passage Over (Containers)	5		个数 (个) Number	4
	起升速度 (m/min) Hoisting	满载 Full Load 28 空载 No Load 62	大车电机 Gantry Motor	功率 (kW) Power	4*30
	大车速度 (m/min) Gantry	满载 Full Load 30 空载 No Load 135		转速 (r/min) Rotating Speed	1150
小车速度 (m/min) Trolley	70	最大轮压 (t) Max Wheel Load	35	装机总功率 Total Installed Power	620HP/750KVA

生产设备 Production Equipment

公司拥有冷热加工设备3300余台套。针对港机产品，配有数控切割、数控镗铣、数控加工中心、热处理、铸造、焊接、钢材预处理、零部件加工装配、喷砂涂装、起吊设备、分段运输车等先进专业化设备。

TZBH owns cold and hot processing facilities up to 3300 sets. For port machinery products, we have numerical control cutting machine, CNC boring and milling machine, CNC machining center, heat treating machine, casting machine, welding machine, steel pretreatment machine, parts processing and assembly, sand-blasting and coating, lifting equipment, block carrier and etc.



Φ260双立柱落地镗铣床
Φ260 NC Boring & Milling Machine



125MN 锻造液压机
125MN Forging Press



25x6.5x6.5m 热处理炉
25x6.5x6.5m Heat-treat Furnace



52.5米x8米x8米 数控龙门镗铣床
52.5mx8mx8m Digital Control Gantry Boring & Milling Machine



φ9m 滚齿机
φ9m Gear Hobbing Machine

生产设备

Production Equipment



c 6m 立式车床
c 6m Vertical Lathe



磨齿机群
Gear Grinders



数控天桥铣机群
NC Overbridge Milling Machines



一喷二涂
Painting and Blasting



造船门机
MU520/420/260/30t-121m Shipbuilding Crane



320t 分段运输车
320t Block Carrier



40t x 85m 门座起重机
40t x 85m Portal Crane



350t+350t-43m 双小车桥机
350t+350t-43m Overhead Crane

检测设备

Testing Equipment

公司理化中心是专门的检测计量机构，具有无损检测、工业化学分析、金相检测分析、力学性能试验、试样制备等先进的检测手段。中心拥有各类先进检测设备30余台，其中从国外引进10台世界水平的检测设备，整体检测能力处于同行业领先水平。

The physical and chemical testing center is a specialized measurement base of TZBH. The center has various instruments, like nondestructive detection, industry chemistry analyzers, metallographic analyzers, mechanical property testing instruments, sample preparation instruments and other advanced testing methods. More than 30 testing equipments are equipped and in which 10 sets are imported from abroad. The overall detection level keeps leading in the heavy machinery industry.



全谱直读光谱仪
The Full Spectrum of Direct Reading Spectrometer



UTM5105X型微机控制电子万能试验机
UTM5105X Floor-Standing Electromechanical Universal Testing Machine



Ni500型金属摆锤冲击试验机
NI500 Metal Pendulum Impact Testing Machine



全站仪 Leica TS11
Electronic Total Station Leica TS11



涂层测厚仪 456 CFSS
Coating Thickness Gauge 456 CFSS



超声波探伤仪 HS610E
Ultrasonic Flaw Detector HS610E

国际市场与合作

International Market and Cooperation

公司将秉承“为我先锋”的企业理念和“自力图强，求实创新，团结奉献”的企业精神，按照“诚信、创新、精益、卓越”的核心价值观，一如既往地为客户创造价值、为社会创造财富、为合作伙伴创造回报，为成为世界一流的海工装备制造企业而努力。

公司先后成立了印度分公司、香港分公司，在德国、秘鲁、蒙古、俄罗斯等国家设立了办事处和产品服务站，保证了出口产品的售后服务和备件供应。

By upholding the enterprise idea of "Being Pioneers", the enterprise spirit of "Self-reliance and hard struggle, Realistic and innovative, Unity and dedication", and the enterprise core value of "Integrity, Innovation, Refinement and Excellence", TZBH will continue to create value for customers, wealth for society, and profit for partners, in the aim to become a world-class offshore equipment manufacturing enterprise.

Our company has established India Sub-co., Hong Kong Sub-co., and the offices with service stations in Germany, Peru, Mongolia, Russia, etc, ensuring the after-sales service of export product and spare parts supply.

太原重工产品出口国家 TYHI products are distributed to the following countries:

阿富汗 / Afghanistan	捷克 / Czech Republic	意大利 / Italy	俄罗斯 / Russia	荷兰 / Netherlands
阿根廷 / Argentina	埃及 / Egypt	日本 / Japan	沙特 / Saudi Arabia	土耳其 / Turkey
澳大利亚 / Australia	法国 / France	哈萨克斯坦 / Kazakhstan	新加坡 / Singapore	阿联酋 / United Arab Emirates
奥地利 / Austria	德国 / Germany	马来西亚 / Malaysia	南非 / South Africa	乌克兰 / Ukraine
巴西 / Brazil	印度 / India	蒙古 / Mongolia	韩国 / South Korea	英国 / UK
加拿大 / Canada	印度尼西亚 / Indonesia	缅甸 / Myanmar	西班牙 / Spain	美国 / USA
智利 / Chile	伊朗 / Iran	巴基斯坦 / Pakistan	突尼斯 / Tunisia	越南 / Vietnam
哥伦比亚 / Colombia	伊拉克 / Iraq	秘鲁 / Peru	泰国 / Thailand

按英文字母排序 In alphabetical order



太原重工产品出口国家地区分布图
Distribution map of countries and regions that import TYHI products

- 出口国家 Exported Countries
- 服务公司 Service Sub Co.,